



INDOFINE Chemical Company, Inc.

121 Stryker Lane, Bldg. 30, Suite 1 • Hillsborough, NJ 08844 • U.S.A.

Phone: (908) 359-6778 • FAX: (908) 359-1179

website: www.indofinechemical.com

e-mail: chemical@indofinechemical.com

CERTIFICATE OF ANALYSIS

Catalog Number: 06-816

Product Name: **LIMONIN**
(Limonene;Citrolimonin;Evodine;Dictamnolactone;Obaculactone)

CAS Number: [1180-71-8]

Lot Number: 1611925

Chemical Formula: C₂₆H₃₀O₈

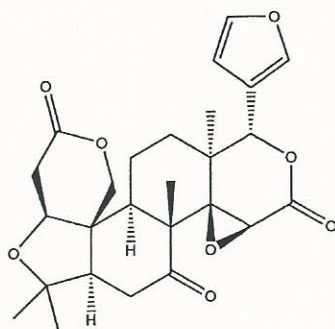
Molecular Weight: 470.51

Appearance: Off-white powder

Loss on Drying: 0.91%

Storage: Store in a cool, dry place

Purity(HPLC): 99.1%





INDOFINE Chemical Company, Inc.

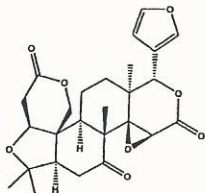
121 Stryker Lane, Bldg. 30, Suite 1 • Hillsborough, NJ 08844 • U.S.A.

Phone: (908) 359-6778 • FAX: (908) 359-1179

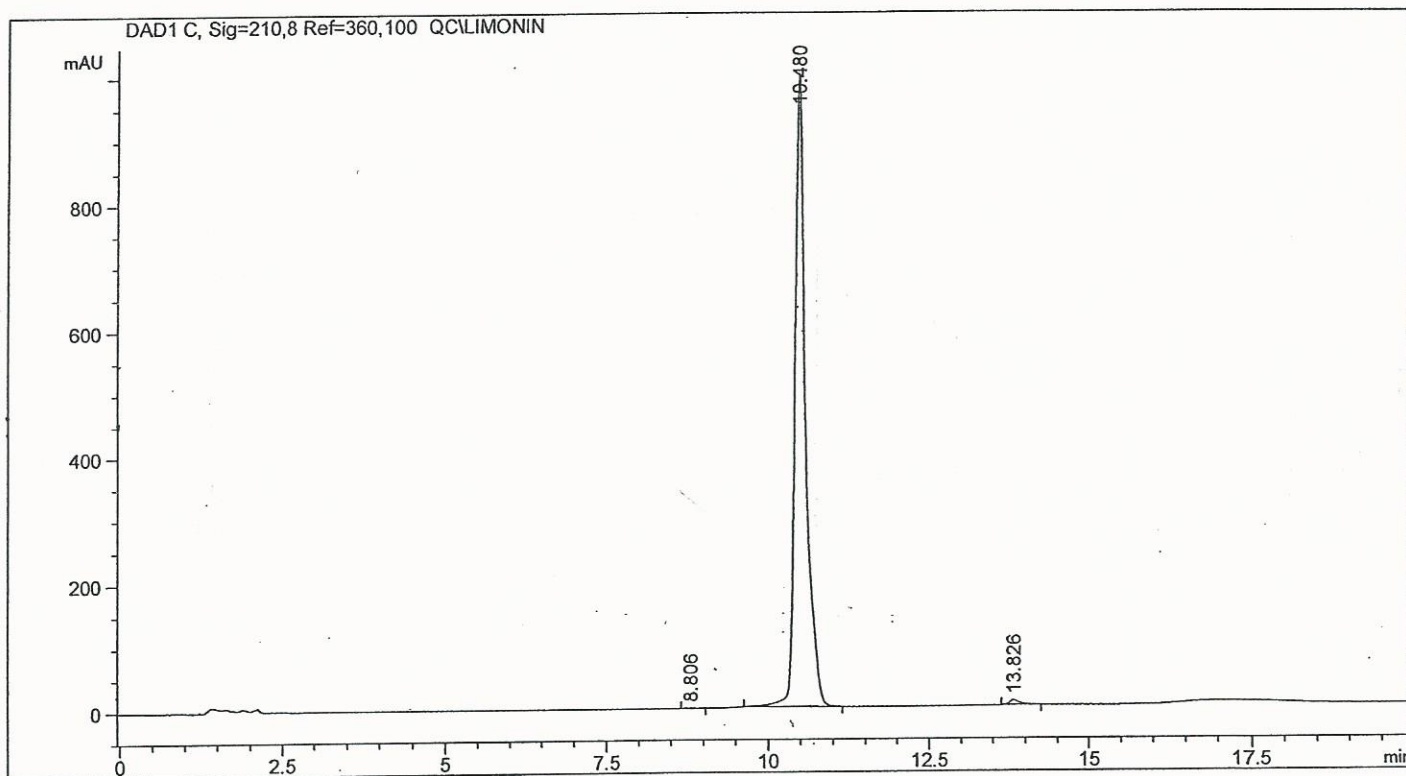
website: www.indofinechemical.com

e-mail: chemical@indofinechemical.com

HPLC ANALYSIS



Catalog No.: 06-816
Product Name: Limonin
Lot No.: 1611925



1: DAD1 C, Sig=210,8 Ref=360,100

#	[min]	[min]	[mAU*s]	[mAU]	%
1	8.806 BB	0.1319	8.23131	9.42146e-1	0.0725
2	10.480 BB	0.1657	1.12489e4	996.42358	99.1312
3	13.826 BB	0.1645	90.35005	7.95396	0.7962

1.13475e4 1005.31969